

Qsee® QR, QSDR, and 9004 Series Port Forwarding Instructions

NOTE! The DVR and PC must be connected to the same router.

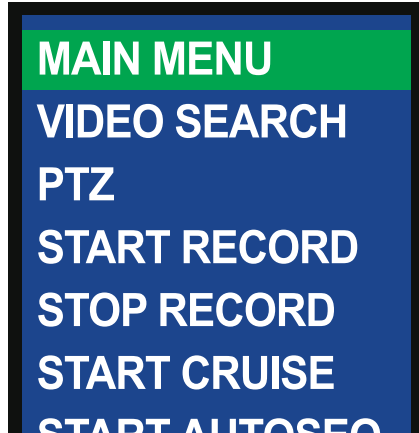
Things you will need to know :

1. The make and model of the router.
2. If you changed the default router login, then you will need to know the user name and password for that router.
3. The IP address for the router.
4. You will be forwarding ports **80**, **9000** and **18004**.

SECTION 1: FIND OUT THE IP ADDRESS OF DVR

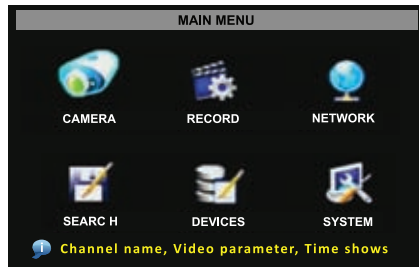
To find out the IP of DVR for your DVR do the following:

Using the mouse, right-click and then select **Main Menu** in the pop-up menu.



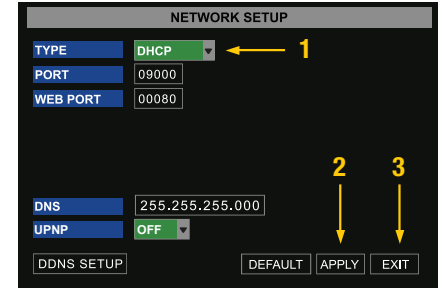
PICTURE 1

Select **NETWORK** in the **Main Menu** window.



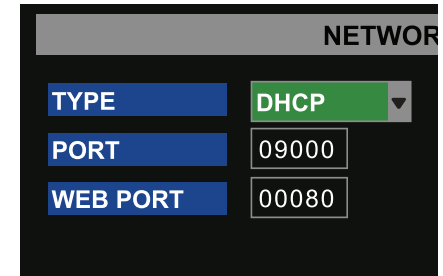
PICTURE 2

- STEP 1.** Select **DHCP** from the **Type** drop-down menu,
- STEP 2.** Click on **APPLY**
- STEP 3.** Select **EXIT**.
- STEP 4.** Restart the DVR.



PICTURE 3

Once the DVR has restarted, reopen the **Network Setup** window and the IP address of the DVR will now be listed. Forward ports 80 and 9000 to this IP address.

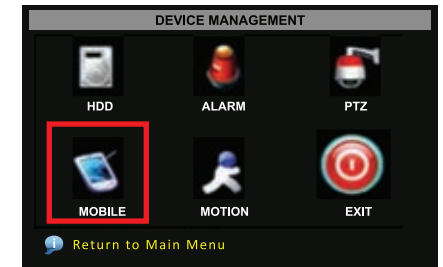


PICTURE 4

If you are going to access the DVR from a smart phone you will also need to go the **Mobile Setup** and set up the DVR for smart phone access.

Go to the Main Menu and click on the **DEVICES** icon.

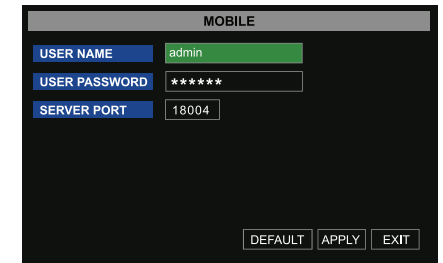
Then click on the **MOBILE** icon.



PICTURE 5

Enter the User Name and Password you wish to use when accessing the DVR via a smartphone.

Smartphones will access the DVR using port 18004. This port will need to be forwarded along with ports 80 and 9000.



PICTURE 6

SECTION 2: DETERMINE THE NUMBER OF ROUTERS ON THE NETWORK

To find out the number of routers on your network, you will need to download a **FREE** router detection program.

STEP 1. Go to <http://www.pcwintech.com/shanes-toolbox>

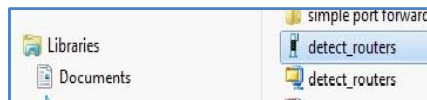
STEP 2. Click on **Detect Multiple Routers** to begin the download.



PICTURE 7

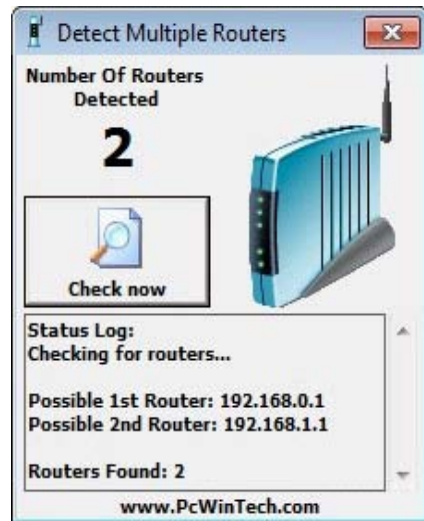
STEP 3. Unzip the application to install it.

STEP 4. Click on the **detect_routers** application to run it.



PICTURE 8

STEP 5. Click on **CHECK NOW** to detect how many Routers are in the network.



PICTURE 9

STEP 6. If there is only one router detected, then you may skip to **Section 3: Simple Port Forwarding**.

If Multiple Routers are Detected

If there are multiple routers, you will see a display similar to **Picture 10**.

If so, it may be preferable to connect your DVR and computer to the router that connects directly to the Internet. However, this is not always possible depending upon your particular situation.



PICTURE 10

In this case, you will need to proceed with the next section using the IP address for Router 1 to forward its ports. After that, you will need to proceed to **Section 4**.

SECTION 3: DOWNLOAD SIMPLE PORT FORWARDING PROGRAM

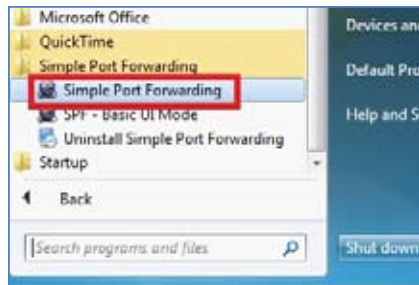
Download the **FREE** Simple Port Forwarding program from:
<http://www.simpleportforwarding.com/download>

Click on **Download on Mirror 7** to download and install this program.



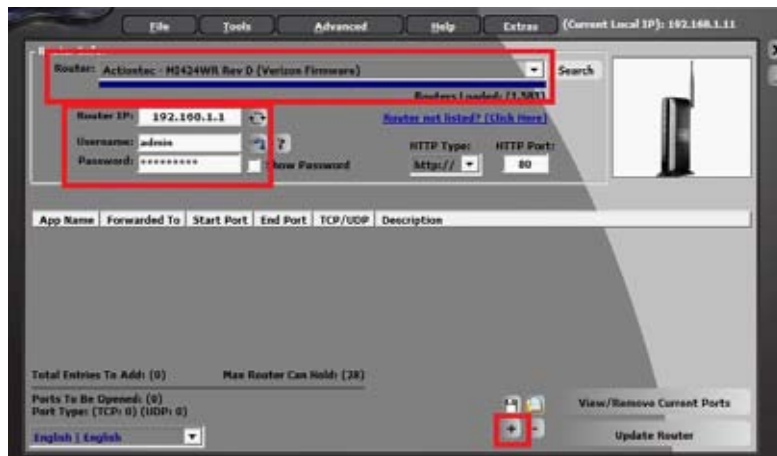
PICTURE 11

Once the program is installed, go to the Windows **Start Menu** (Windows icon in the lower left of your monitor) and look for **Simple Port Forwarding** in the program list. Click on the program to launch it.



PICTURE 12

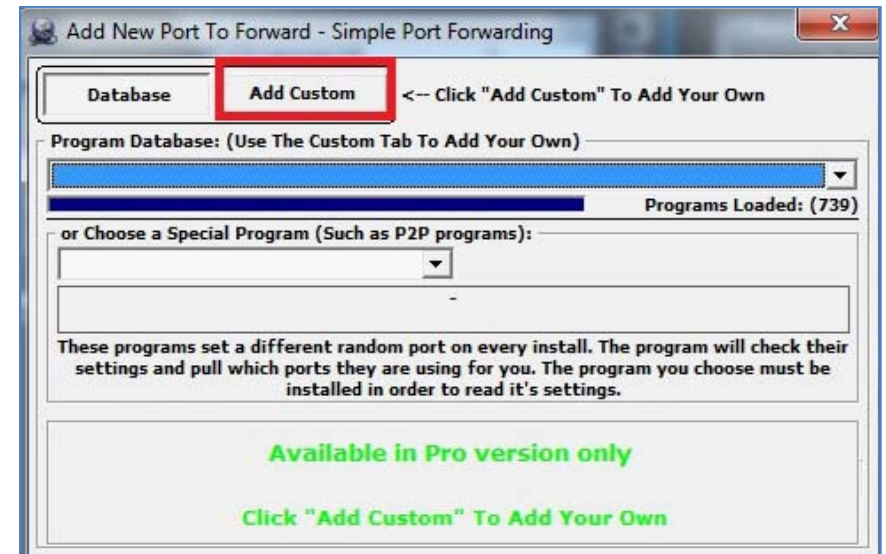
Once **Simple Port Forwarding** has launched, select your router from the list. The default Router IP and Login information will automatically come up. If you have previously changed the login information, then you will have to enter it manually



PICTURE 13

Click on "+" at the bottom to open the window allowing you to set your ports.

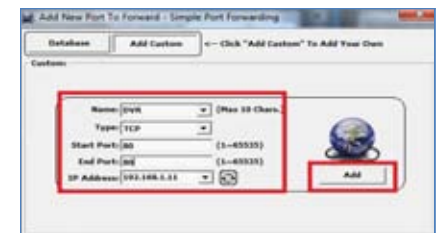
Click on **ADD CUSTOM**.



PICTURE 14

Input the required information:

Name: (You can name your DVR if you wish)
Type: TCP
Start Port: 80
End Port: 80
IP add: IP of DVR obtained in **Step 1**.



PICTURE 15

Click on **ADD**

Repeat for port 9000, and also for 18004 to allow smartphone access.

You will now be returned to the main window of the program. The ports you added will now show on the list. Click on **Update Router** at the bottom.

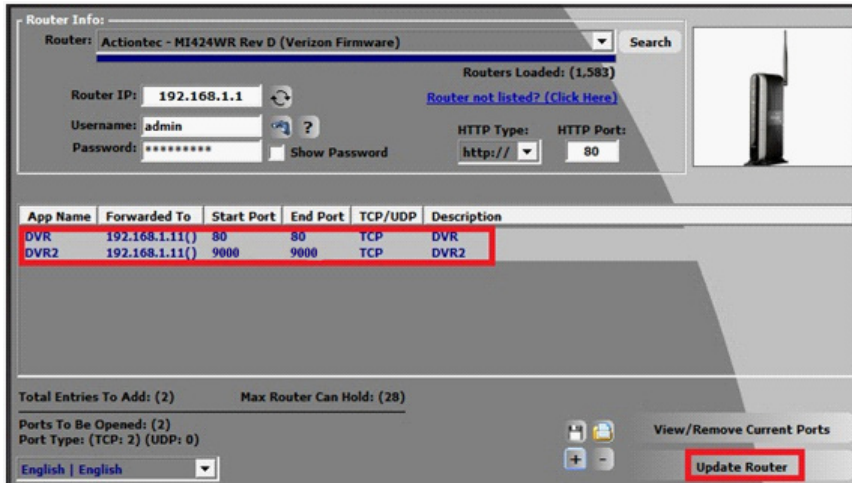


FIGURE 16

You will see the "Updating is in progress" message. Please wait until you see it say **DONE** at the bottom.

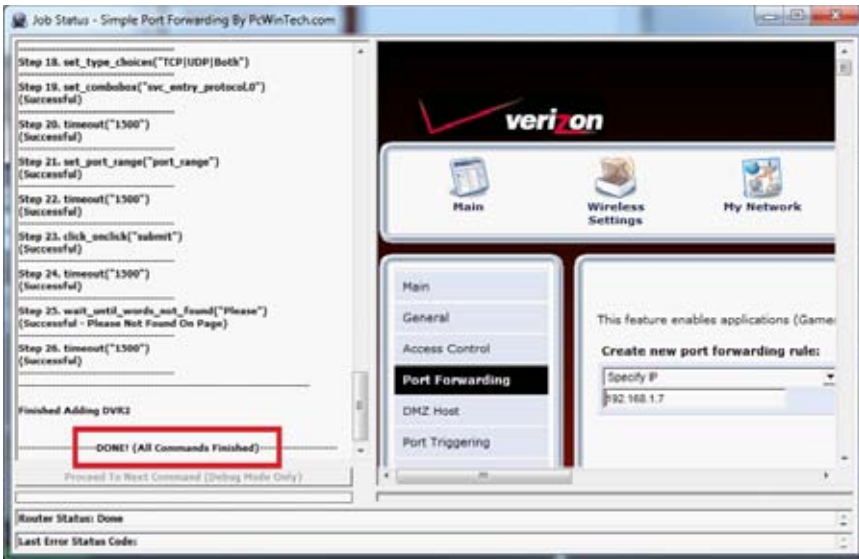


FIGURE 17

If for some reason, a port or ports that you forwarded are not listed in the Router and if you see a message in the Scripts list on the left side of the window stating that the port already exists (**Red box in Picture 18**), then you will need to change the Port 80 to 85 in the DVR and start over again.

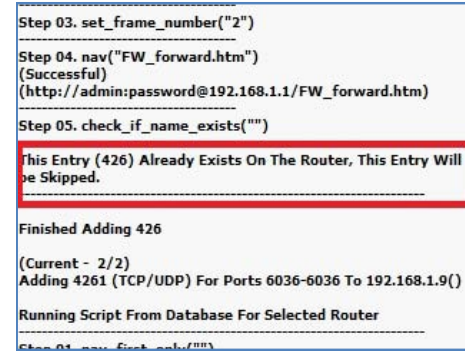


FIGURE 18

Once you receive the **DONE** message that the ports have been successfully forwarded, test if the ports are working by clicking on item number 7 in the **Check List - Test that the ports now work**.

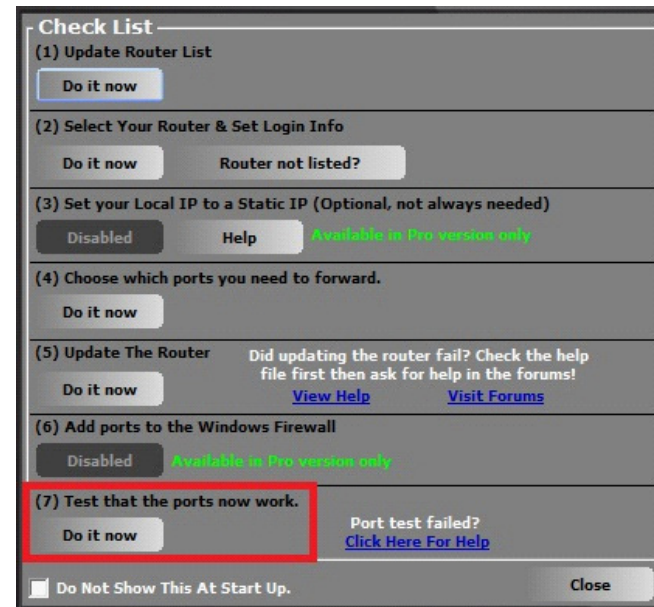
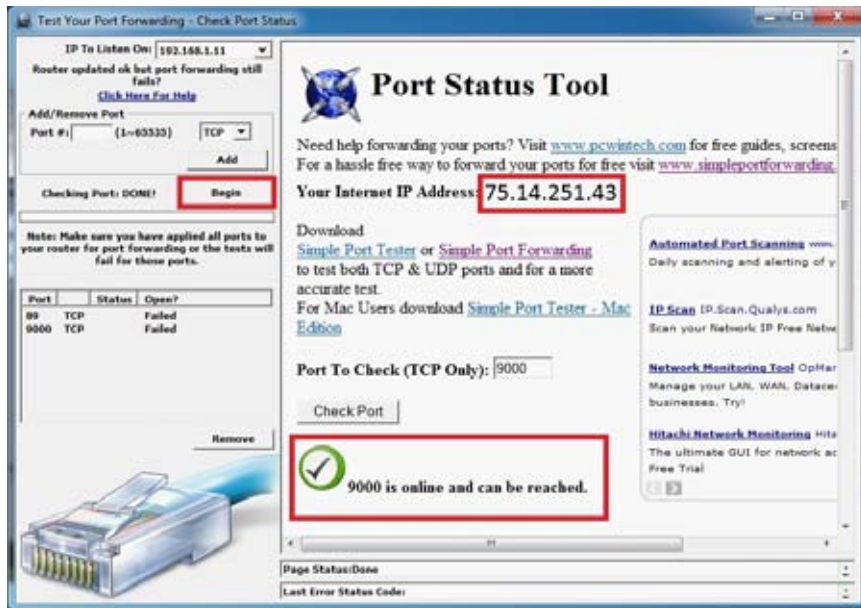


FIGURE 19

Click on **Begin**.

If you receive a message stating that the port is online and can be reached, then you have set it up correctly.



PICTURE 20

To connect to your DVR from the Internet, you will need to put the Internet IP address shown after “**Your Internet Address:**” message into the browser or access program window.

If you are forwarding any other port instead of port 80, then you need to put that port’s number at the end of the address.

Example: if you use port 85, you will need to enter: <http://75.14.251.43:85>

Instructions for using the ASee software on your smartphone can be found on the CD that came with your DVR, or it can be downloaded by clicking on the links below:

Android: <http://q-see.com/files/DeviceFiles/R-AndroidSetupNewweb.pdf>

Blackberry: <http://q-see.com/files/DeviceFiles/R-Smart Phone Access Blackberry.pdf>

iPhone: <http://q-see.com/files/DeviceFiles/R-Smart Phone Access iPhone.pdf>

Symbian: <http://q-see.com/files/DeviceFiles/R-Smart Phone Access Symbian.pdf>

Windows Mobile:

<http://q-see.com/files/DeviceFiles/R-Smart Phone Access Windows Mobile.pdf>

SECTION 4: SETTING UP DMZ IN ROUTER 2



NOTE! You will only need to proceed with this section if you detected a second router in **Section 2**.

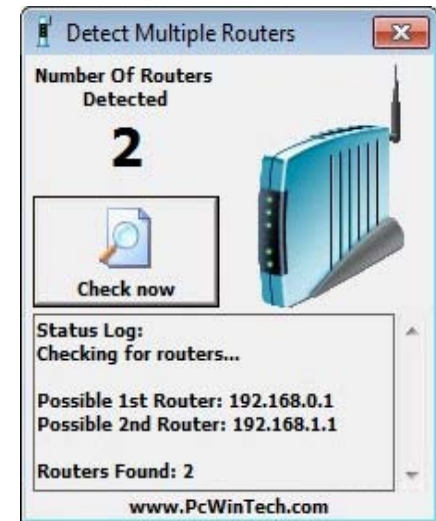
STEP 1. Login into Router 1 by putting the IP of Router 1 into the Internet Explorer browser, as in the example shown in **Picture 21** where the IP address of Router 1 is 192.168.0.1

STEP 2. Find the status page on the router settings that shows the WAN/Internet IP address and write it down this WAN IP address.

STEP 3. Log into the Router 2 by putting the IP of Router 2 into the Internet Explorer browser, as in example shown in **Picture 21** where the IP address of Router 2 is 192.168.1.1

STEP 4. Find the **DMZ** page in the router settings.

STEP 5. Enter the WAN IP for Router 1 into the **DMZ** page and enable DMZ.



PICTURE 21



NOTE! If you do not have a **DMZ** setting in the router, check to see if there is a **Bridge** setting. If so, then use the **Bridge** setting instead of DMZ.

STEP 6. Save your changes.

You have forwarded the ports on the router to which the DVR is connected, to the IP address of the DVR, and set the primary router to pass the connection to this router.